

VISION 9

The armored vending machine

Next-generation vending
Automated kiosks for any kind of product
Magex patented system spiral-free

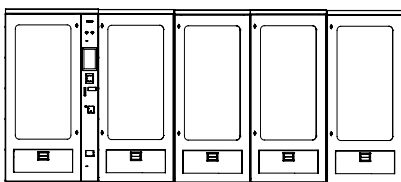
FEATURES

-  10" Monitor
-  Payments system setup
-  9 lanes modular shelves
-  Break-proof Glass
-  Internal LED lighting



OPTIONS

- Sanification system
- Loyalty card & customer App integration
- Temperature control
- Black color
- Up to 4 satellite modules



USER EXPERIENCE

Quad-Core CPU 10" touchscreen panel, 1920x1080 full HD for an e-commerce-like user experience. The screen provides a menu where the consumer can browse product descriptions, promotional images and videos.

REAL-TIME DATA SERVICE

Magex provides a vending machine real-time management service, thanks to our web-based interface accessible from virtually any kind of device.

You can check real-time selling statistics, stock status, actual stock for every currency denomination.

You will be able to monitor the internal temperature and visualize it in a chart.

MAGEX PATENTED DISPENSING SYSTEM

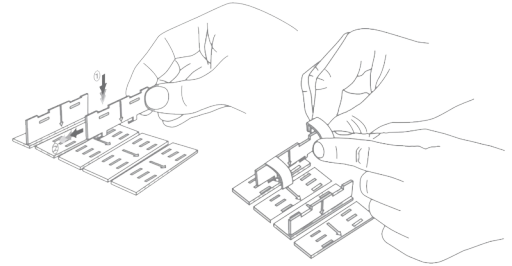
Magex vending machines boast unprecedented flexibility in managing very different items.

Our **Conveyor patented dispensing system** fits any kind of product, also combining adjacent lanes to move larger products.

End-user can **easily customize lanes** setup to manage effectively any size and shape item to sell.

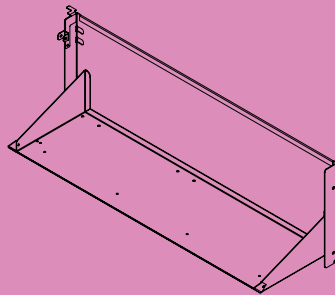
Moreover, interlocking partitions keep items separate into the same lane.

Our advanced multi-function self-diagnostic tool performs a continuous system health check, starting from lanes operation status before each delivery up to a full system reboot if needed.



LIFT DELIVERY SYSTEM

Our internal lift system gently delivers any kind of items in the withdrawal area under the window.



VISION 9

A SOLID AUTOMATIC KIOSK

The **armored chassis** makes it especially suitable for outdoor employment.

The large deep window stocks a large number of products, endowing a charming display view.

DATA SHEET

Width	1132 mm
Height (with cooling unit)	1984 mm (2284)
Depth	984 mm
Withdrawal area	1100 x 200 mm
Number of floors standard/ max	8
Lanes per floor	9
Voltage supply	230V/50Hz 110V/60Hz

